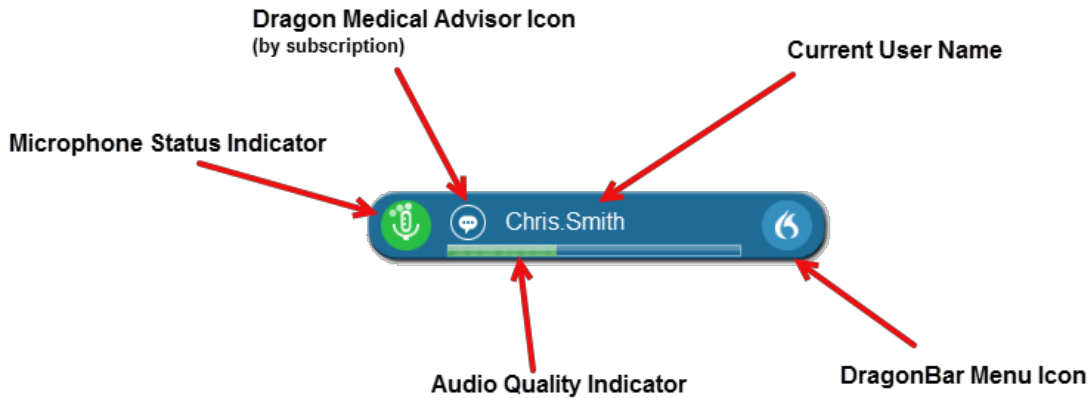


DMO DragonBar

The DragonBar can be used to start/stop dictation, receive help, and configure DMO's setup. It can be moved by clicking and dragging with your mouse.



Microphone Status Indicator

Click the microphone button to turn the microphone on and off. The indicator changes to let you know whether the microphone is listening.



Green = Mic is active (listening)

The Microphone Status Indicator shows a spinning motion to let you know DMO is listening and processing your speech or commands.



Red = Mic is off (not listening)



Blue = Mic is in stand-by mode for Wake-on-Word functionality (DMO 2020.1 and greater)



Red with Opaque background = Mic is in stand-by mode for Wake-on-Word functionality (DMO 5.0)



Yellow outline = Basic Text Control is enabled



Audio Quality Indicator

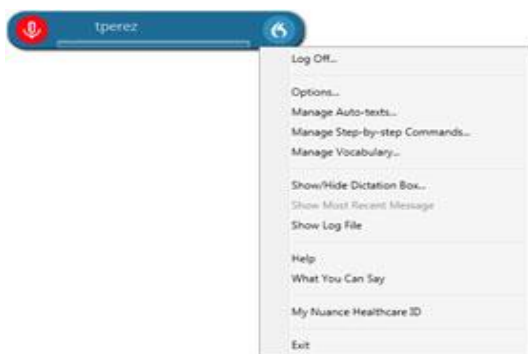
- Voice Activity Detection (VAD) – Indicates audio is recording and displays the volume level.
- For optimal performance, position your microphone approximately 1 inch below your mouth and 1-3 inches away.

Current User Name

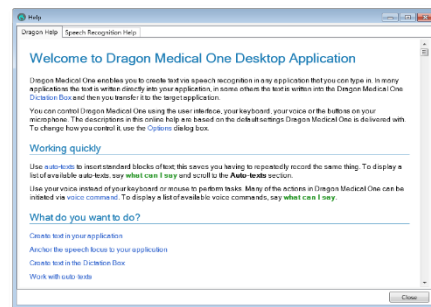
This indicates the user name of the person currently logged into DMO. Users must be logged into Dragon as themselves to have access to their individual commands and settings.

DragonBar Menu

Click the DragonBar Menu Icon to see a drop-down menu of all the features in DMO. This menu includes user and microphone settings and options that allow users to access information about and configure the DMO application.



- **Log Off:** Allows you to change Users, Microphones, and Specialties without having to re-launch DMO from the desktop icon on that machine. Depending on your sign in environment, you may be required to Exit DMO and relaunch to change your settings.
- **Options:** Allows users to set their own preferences; for example, PowerMic button customization.
- **Manage Auto-Text:** Manage and create Auto-Text commands
- **Manage Step-by-step Commands:** Manage and create Step-by-Step commands
- **Manage Vocabulary:** Add and edit custom words or phrases for better accuracy.
- **Show/Hide Dictation Box:** A free-text box that allows you to collect dictated text independent of your EHR and then “Transfer Text” into your target application.
- **Show Most Recent Message:** Will display the last recognized voice command
- **Help:** Dragon Help | Speech Recognition Help. Walks you through detailed steps on how to use dictation and all the additional features DMO offers. The Help session is searchable using Ctrl+F.



- **What You Can Say:** Shows all available commands in DMO, grouped by category.

You can find these topics under **What You Can Say**:

Topic	Description	Command
Auto-Texts	Use Auto-Texts to insert standard texts instead of recording manually. Shared Auto-Texts managed by the organization's Dragon Administrator are found here.	[example]: Insert Negative Review of Systems
User Settings	Modify the settings.	Open Settings
Dragon	Control the application.	Hide Dragon
Anchoring	Control the application that has the speech focus anchored to it.	Show anchored application
Formatting	Format text using your voice.	[example]: All caps that
Manage Auto-Texts	Create and edit Auto-Texts using your voice. Auto-Texts created by the user are found here.	Create Auto-Text
Manage Commands	Create and edit commands using your voice.	Create command
Dragon Medical Advisor	Use the Dragon Medical Advisor to improve clinical documentation.	Run Advisor
Customer Feedback	Opens the portal to send DMO feedback	Provide Feedback
Tutorial	Run a Dragon Medical One tutorial to learn more about using DMO.	Open Tutorial
Correction	Edit what you see on the screen.	Delete word
Navigation	Move the Speech focus using your voice	[examples]: Next field, go to next field, move to next field
Recording	Control the microphone using your voice.	Microphone off
Personalization and Help	Switch between your dictation and more information.	Open Help

- **Nuance Healthcare ID:** Complete your registration to access additional benefits, such as Clinical Calculators mentioned later in this document.
- **Exit:** Shuts down DMO entirely. It is recommended that you ALWAYS exit Dragon when you are finished using the application.

Hide Button

Clicking the Hide button will minimize the DMO DragonBar. This can also be accomplished with the command “Hide Dragon.” To restore the DragonBar, click the icon in the system tray or use the command “Show Dragon.”

