

## Edit Text

DMO adapts to the way individuals use vocabulary and their unique dictation style. DMO is continuously learning; the more DMO is used, the better its recognition. It is essential to edit misrecognitions and correct words or phrases that DMO did not get quite right. Voice commands can be used to select different words, numbers, sentences or phrases.

There are three ways to edit dictated text:

- Manually edit dictated text to correct any misrecognized words
- Use voice commands to select words, numbers, sentences, or phrases
- Use the correction menu

### Selecting Text:

Place the cursor within the text to use voice commands. Voice commands can be used to select spoken or typed text. Users can select:

- Single words
- Phrases
- Whole sentences
- Paragraphs
- Punctuation marks

Pause briefly before saying commands. The pause lets DMO know the phrase is a command. Do not pause while speaking a command. For example, when speaking the command “Select Patient,” do not pause between the words “Select” and “Patient.”

Command Name	Function
<b>Select [word]</b>	Select a single word
<b>Select [word] through [word]</b>	Select a string of words
<b>Select this sentence</b>	Select the sentence the cursor is placed in
<b>Select this paragraph</b>	Select the paragraph the cursor is placed in

### Common Voice Commands

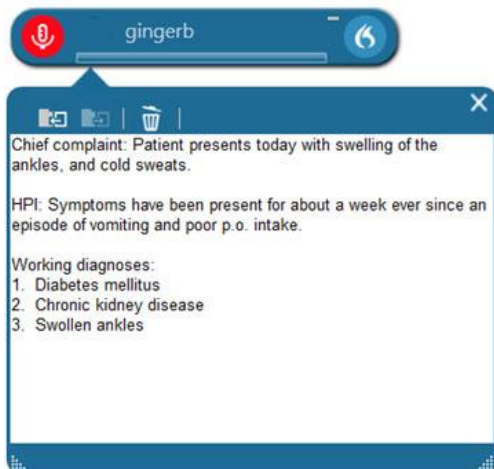
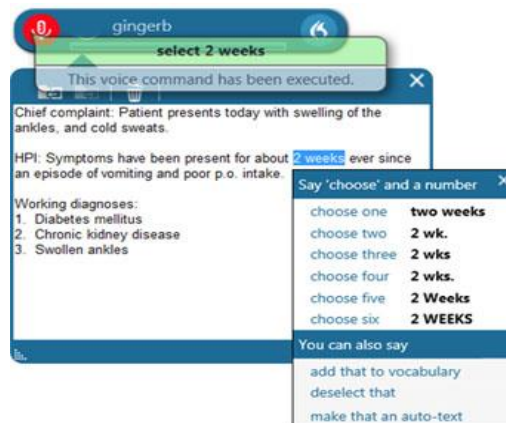
Command Name	Function
<b>Scratch that</b>	Erase the last word or phrase spoken
<b>Deselect that or Unselect that</b>	Deselect highlighted text
<b>Undo That</b>	The same as pressing CTRL+Z to undo the last action
<b>Redo That</b>	The same as pressing CTRL+Y to redo the last action
<b>Go back</b>	Return the cursor to the position prior to the selection command
<b>Bold that</b>	Bold the selected text
<b>Select again or Select previous</b>	Scroll backwards through the text to select a different occurrence of the selected text

**Exercise 2:**

Using the dictation from Exercise 1, we will demonstrate how to make some changes using the “Correct <text>” or “Select <text>” command. Either word can be used in the following scenarios.

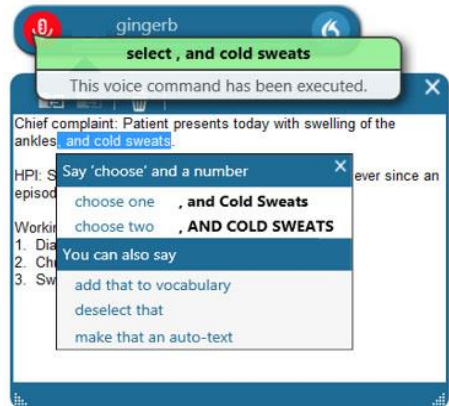
**Correction #1:** 2 weeks should be one week

1. **Say** "Correct (or Select) 2 weeks"
2. **Observe:** DMO presents variations relevant to the selected text. If you wanted to change the format of how the text appears, you could make a selection from the correction menu (such as “Choose two” or “Choose six”) to automatically make the change.
3. **Say** "one week"



**Correction #2:** Cold sweats should not have been included in chief complaints.

1. Say "Select comma and cold sweats"
2. Say "Delete that"
3. **Observe** that although "Delete That" is not listed in the choices presented, saying the command deletes the selected text.



**Correction #3:** A word was omitted from the HPI section.

1. Say "Insert before vomiting"
2. Say "prolonged"
3. **Observe** that DMO has inserted "prolonged" in the proper location.

